



SIMEC GROUP
MORE THAN ENGRAVINGS

EMBOSS



SINCE 1967 EMBOSSING ROLLERS

EMBOSS

Embossing Rollers

Our history in the embossing industry began in 1967 and has seen continuous development and a great deal of dedicated investment since then. The technologies at our disposal allow us to produce embossing rolls of up to 25 tons and 7000 mm table and 800 mm diameter.



SCAN
TO FIND OUT MORE



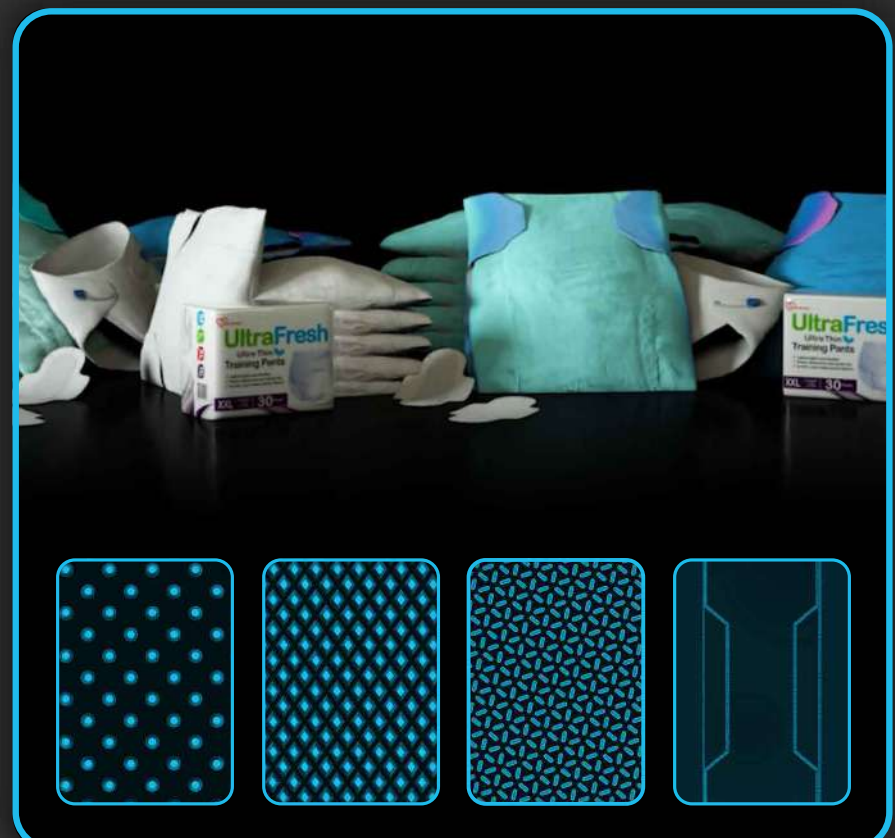
Nonwoven

In our premises in Olgiate Olona a structure dedicated to this specific application sector has been built, where rollers with lengths up to 7000 mm, diameters up to 800 mm and weights up to 25 tons can be processed.

On customer's request Simec can develop new engraving patterns as well as provide a reverse engineering service both from existing rolls and from customer's samples.

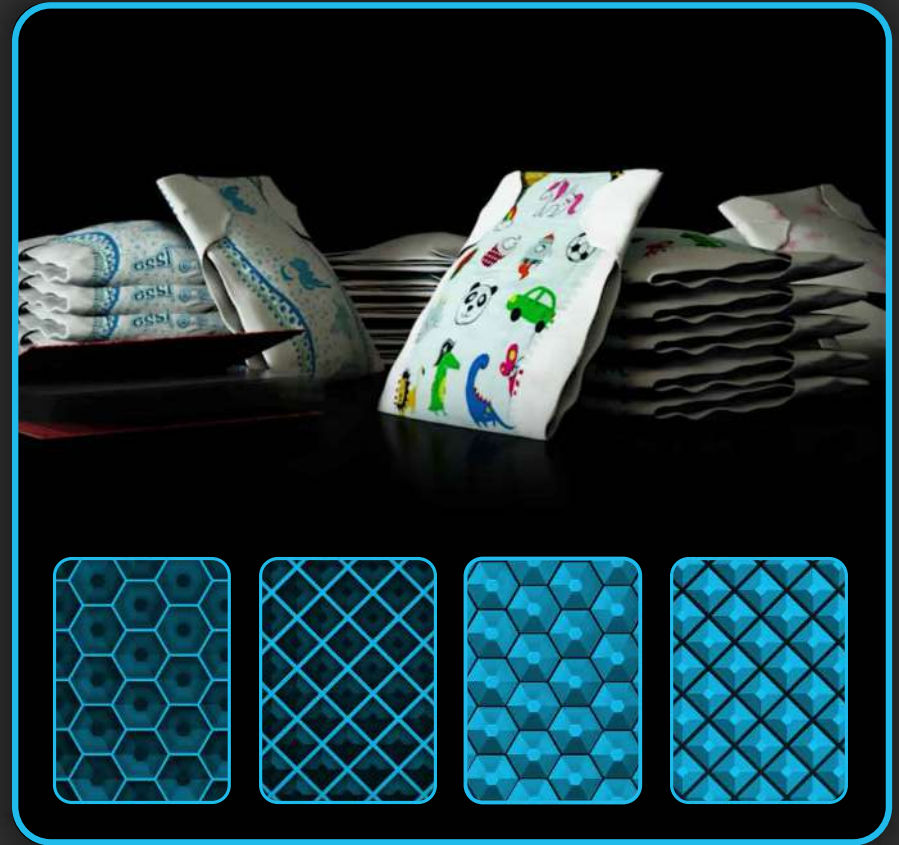
Ultrasonic

For the operators in the Personal Care and Medical sectors, Simec is able to manufacture and engrave special rollers for particular production lines. In addition to all the engraving technologies normally used in the different applications, Simec has invested in 5-axis robotized lines as well as in systems for the detection of profiles on rollers and for the analysis of samples of the finished product.



Technical Film

Simec is specialised in the production of rollers for processing the films used in the Personal Care and Medical industry, for which we have developed specific engraving patterns and we can offer different types of services such as reverse engineering of both existing rollers and analysis of engraving patterns. We can supply new rolls as well as offer the refurbishment service. Engraving tools are made in a very short time using direct laser engraving to obtain any geometry.

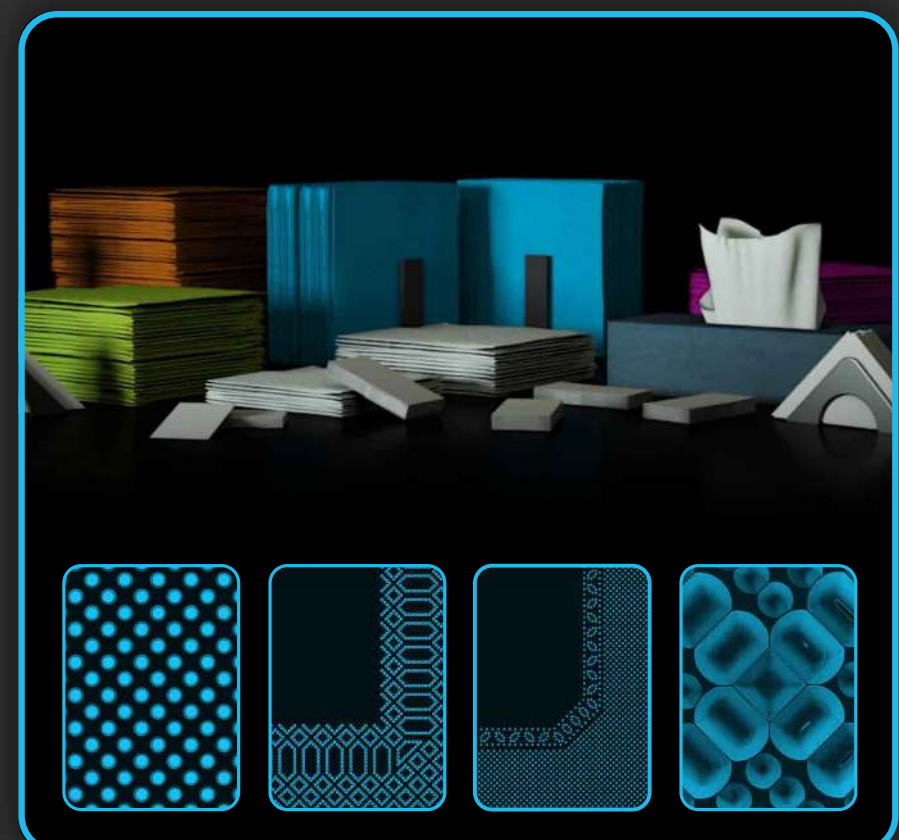


Tissue Converting

Simec can offer a wide range of products to equipment manufacturers as well as to final converters operating in this sector, including embossing rolls, which can be offered in two different solutions: newly manufactured or regenerated with diameter recovery by welding. We can process rollers with different technologies: chemical engraving, combined solutions and engraving by mechanical process. We have no dimensional limitations: we can machine tables up to 7000 mm and diameters up to 900 mm. We can process pre-hardened materials or chrome-plated steel.

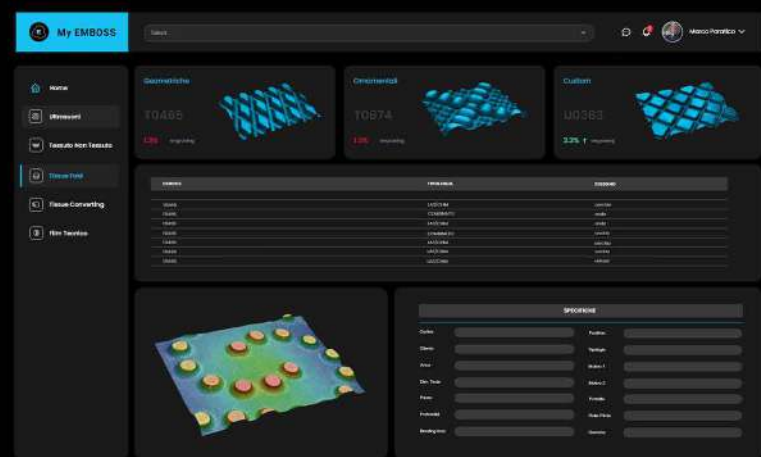
Tissue Fold

In the tissue converting sector we also offer rollers for the Fold sector, thus completing the product range for the tissue industry. Our offer includes rollers for woolpaper-steel, steel-steel, pin-pin and top-to-flat applications. We can manufacture our products using the following engraving technologies: chip removal, mechanical engraving, direct laser engraving and combined process on soft or pre-hardened materials.



My Emboss

Collaborating remotely on technically advanced projects or defining the model that best serves a particular purpose is not easy. That's why we have designed and developed our MyEMBOSS, a true "personal styler" of cylinders. It is a software developed entirely in-house that allows to design a cylinder by four hands, browsing through a large range of patterns with any customer, even on the other side of the world. Its output can also be selected as a starting point for bringing new ideas and ornamental patterns to life. Advice, design, just-in-time quotations: all in a few clicks and from your own desk.



Olgiate Plant

The headquarter is located in Olgiate Olona, in the economic heart of Lombardia.

It takes a 25,000 square meter area, 12,000 of which are roofed.

Organized in 4 distinct plants, it houses commercial activities, R&D and the production of DELTOR branded rollers and embossing rollers up to 25 tons.

We cover 90% of our roller requirements by manufacturing them in-house using modern machinery and robotic lines.

Montefino Plant

The Montefino production hub has been in operation since 1990. Born like an ambitious project, it has grown steadily over the years to its actual asset: 40,000 square metres, 13,000 of which roofed, divided into 4 different plants dedicated to the processing of STARLOX and EMBOSS branded products.

The entire production cycle of laser engraved ceramic rollers and sleeves takes place here. Plants are largely powered by the energy produced by the photovoltaic systems installed.

